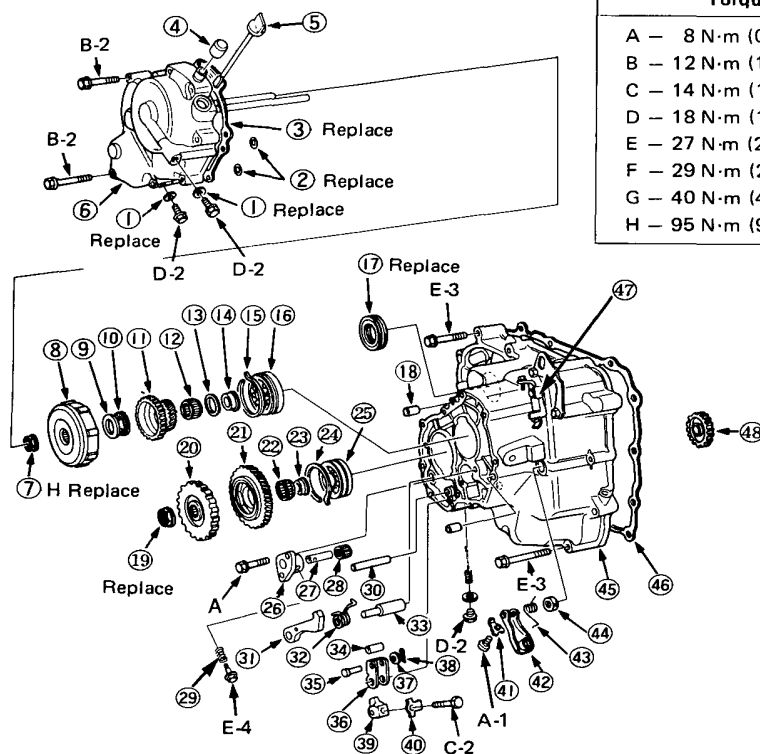


Hondamatic

Index

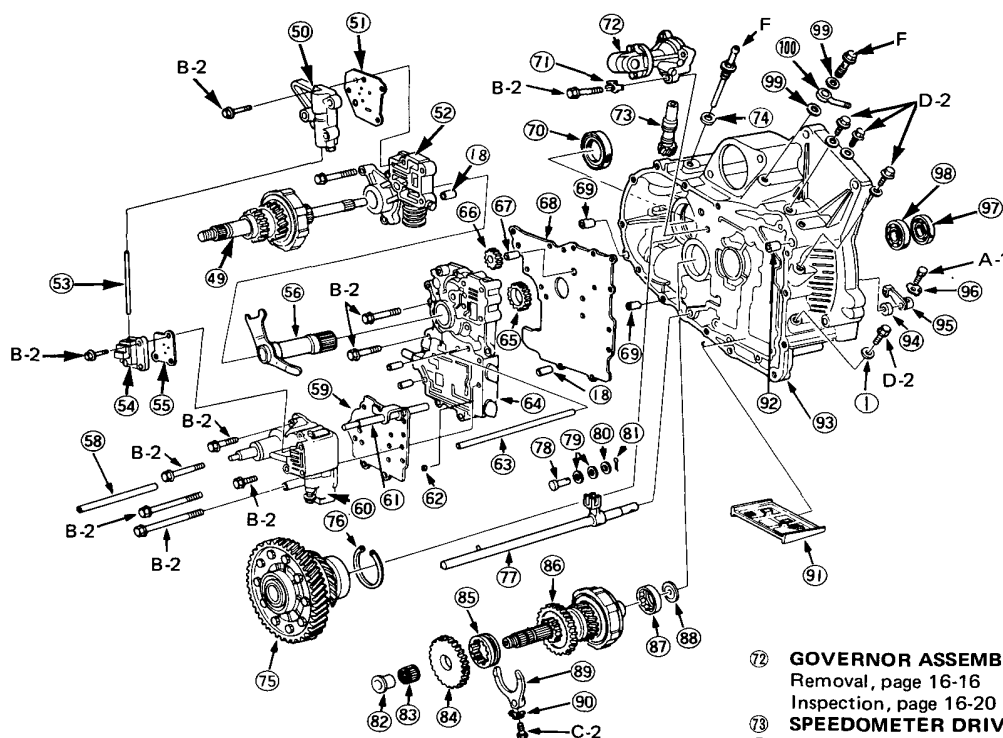
- NOTE:
- Clean all parts thoroughly in solvent and dry with compressed air.
 - Check that the oil passages are not clogged.
 - Lubricate all parts with ATF before reassembly.



Torque	Bolt size
A — 8 N·m (0.8 kg-m, 6 lb-ft)	1. 5 x 0.8 mm
B — 12 N·m (1.2 kg-m, 9 lb-ft)	2. 6 x 1.0 mm
C — 14 N·m (1.4 kg-m, 10 lb-ft)	3. 8 x 1.25 mm
D — 18 N·m (1.8 kg-m, 12 lb-ft)	4. 10 x 1.25 mm
E — 27 N·m (2.7 kg-m, 20 lb-ft)	
F — 29 N·m (2.9 kg-m, 21 lb-ft)	
G — 40 N·m (4.0 kg-m, 29 lb-ft)	
H — 95 N·m (9.5 kg-m, 70 lb-ft)	

- ① WASHER 8 mm
- ② O-RING 7.7 x 1.9 mm
- ③ END COVER GASKET
- ④ BREATHER CAP
- ⑤ DIPSTICK
- ⑥ END COVER
Removal, page 16-13
Disassembly, page
- ⑦ LOCKNUT 22 mm
- ⑧ LOW CLUTCH
Removal, page 16-13
Disassembly, page 16-33
Assembly, page 16-36
- ⑨ THRUST WASHER 26 mm
- ⑩ THRUST NEEDLE BEARING 31 x 47 x 2 mm
- ⑪ 1st GEAR
- ⑫ NEEDLE BEARING 31 x 36 x 18.5 mm
- ⑬ THRUST NEEDLE BEARING 31 x 47 x 2 mm
- ⑭ COLLAR 26 mm
- ⑮ SNAP RING 68 mm
- ⑯ MAINSHAFT BALL BEARING
Replacement, page 16-42
- ⑰ OIL SEAL
Replacement, page 16-50
- ⑱ DOWEL PIN 8 x 14 mm
- ⑲ LOCKNUT 30 mm
- ⑳ PARKING GEAR
- ㉑ COUNTERSHAFT 1st GEAR
- ㉒ NEEDLE BEARING 30 x 35 x 11 mm
- ㉓ 1st GEAR COLLAR
- ㉔ SNAP RING 62 mm

- ㉕ COUNTERSHAFT BALL BEARING
Replacement, page 16-41
- ㉖ REVERSE IDLER SHAFT HOLDER
- ㉗ REVERSE IDLER SHAFT
- ㉘ NEEDLE BEARING 14 x 18 x 15 mm
- ㉙ SPRING
- ㉚ STOP PIN
- ㉛ PARKING BRAKE PAWL
- ㉜ PARKING PAWL SPRING
- ㉝ PARKING BRAKE SHAFT
Removal, page 16-12
- ㉞ PARKING PAWL ROLLER
- ㉟ ROLLER PIN
- ㊱ PARKING SHIFT ARM
- ㊲ WASHER 5 mm
- ㊳ LOCKPIN
- ㊴ PARKING BRAKE LEVER
- ㊵ LOCK WASHER 6 mm
- ㊶ LOCK WASHER
- ㊷ THROTTLE CONTROL LEVER
- ㊸ THROTTLE CONTROL SHAFT SPRING
Removal, page 16-14
Installation, page 16-49
- ㊹ THROTTLE CONTROL SHAFT SEAL
- ㊺ TRANSMISSION HOUSING
- ㊻ TRANSMISSION HOUSING GASKET
- ㊼ THROTTLE CONTROL CABLE BRACKET
Adjustment, page 16-60
- ㊽ REVERSE IDLER GEAR
Removal, page 16-13
Installation, page 16-49 and 50



49 MAINSHAFT ASSEMBLY

Removal, page 16-16

Inspection, page 16-28

Assembly, page 16-47

50 LOCK-UP VALVE BODY

Removal, page 16-17

Inspection, page 16-24

51 LOCK-UP VALVE SEPARATOR PLATE

52 REGULATOR ASSEMBLY

53 OIL FEED PIPE

54 CLUTCH PRESSURE CONTROL VALVE BODY

55 CLUTCH PRESSURE CONTROL SEPARATOR PLATE

56 STATOR SHAFT ARM

Removal, page 16-18

57 ☆ CLUTCH

58 OD CLUTCH PIPE

59 SERVO VALVE SEPARATOR PLATE

60 SERVO VALVE ASSEMBLY

Removal, page 16-17

Inspection, page 16-25

61 THROTTLE VALVE SHAFT

62 STEEL BALL

63 1st CLUTCH PIPE

64 MAIN VALVE BODY ASSEMBLY

Inspection, page 16-21

Assembly, page 16-43

65 PUMP DRIVE GEAR

66 PUMP DRIVEN GEAR

67 OIL PUMP GEAR SHAFT

68 MAIN VALVE SEPARATOR PLATE

69 DOWEL PIN 14 x 20 mm

70 OIL SEAL 35 x 68 x 9 mm

71 LOCK WASHER 6 mm

72 GOVERNOR ASSEMBLY

Removal, page 16-16

Inspection, page 16-20

73 SPEEDOMETER DRIVE GEAR

74 WASHER 12 mm

75 DIFFERENTIAL

76 SNAP RING 72 mm

77 CONTROL SHAFT

78 MANUAL VALVE PIN

79 ROLLER

80 WASHER 5 mm

81 COTTER PIN

82 REVERSE GEAR COLLAR

83 NEEDLE BEARING

84 30 x 36 x 14 mm

85 REVERSE SELECTOR GEAR

86 COUNTERSHAFT

Removal, page 16-16

Dis/assembly/Inspection, page 16-29

87 COUNTERSHAFT NEEDLE BEARING

Replacement, page 16-41

88 OIL GUIDE PLATE

89 REVERSE SHIFT FORK

Removal, page 16-15

Installation, page 16-48

90 LOCK WASHER 6 mm

91 OIL SCREEN

92 DOWEL PIN 14 x 25 mm

93 TORQUE CONVERTOR HOUSING

94 CONTROL SHAFT OIL SEAL

95 CONTROL LEVER

Removal, page 16-20

Installation, page 16-45

96 LOCK PLATE

97 MAINSHAFT OIL SEAL

Replacement, page 16-41

98 MAINSHAFT BALL BEARING

Replacement, page 16-41

99 WASHER 12 mm

100 HOSE JOINT